

Term Lists

Term lists are used to store terms such as keywords, author names, or journal names. You can use these stored terms when entering references to improve consistency and accuracy of information in your library. By default three empty term lists are available with every library: Authors, Journals, and Keywords.

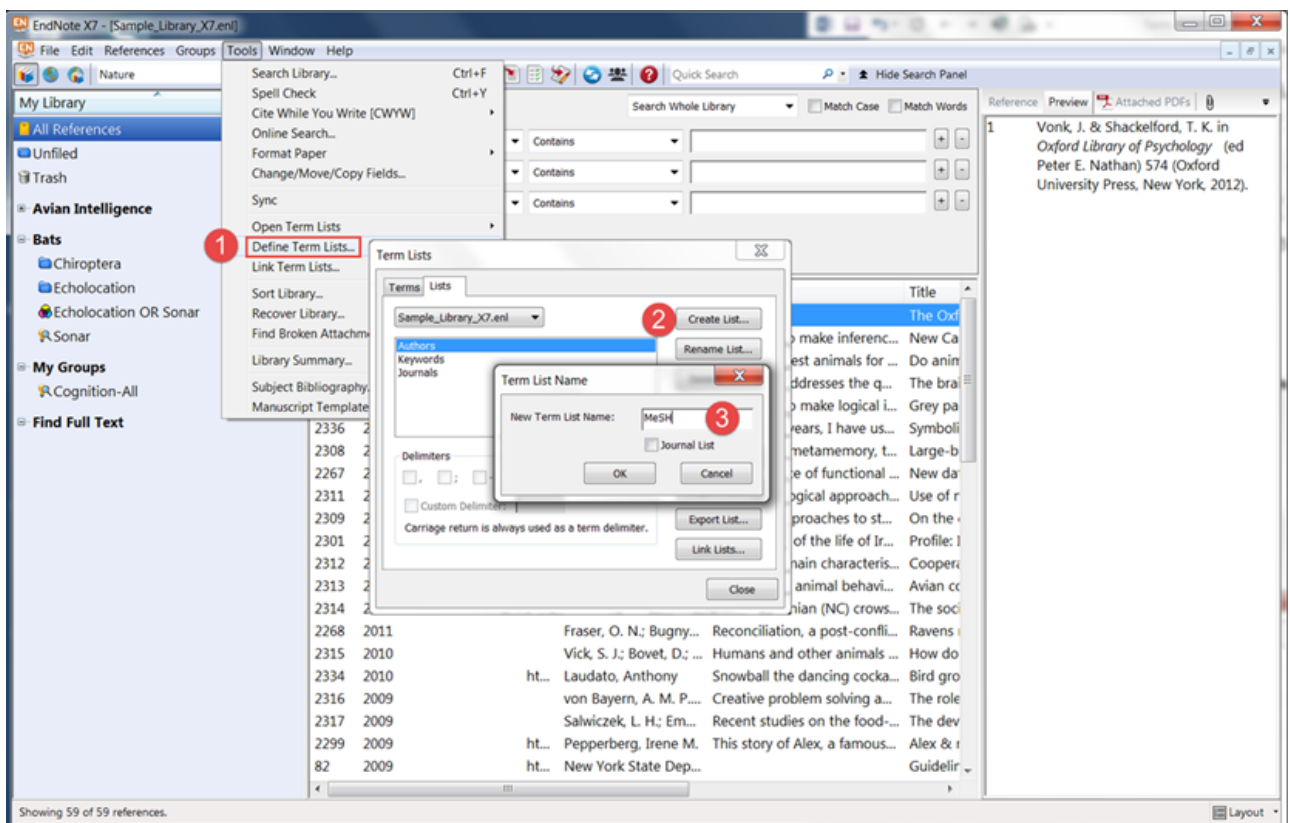
In the example below is explained how to create a new term list in which the biomedical thesaurus **MeSH** will be imported. You can download the MeSH terms

www.researchsoftware.com/downloads/mesh-terms-medical-subject-headings-nlm-2016-0 [1]

Creating a new Term List

Open the library in which you want to create a new list:

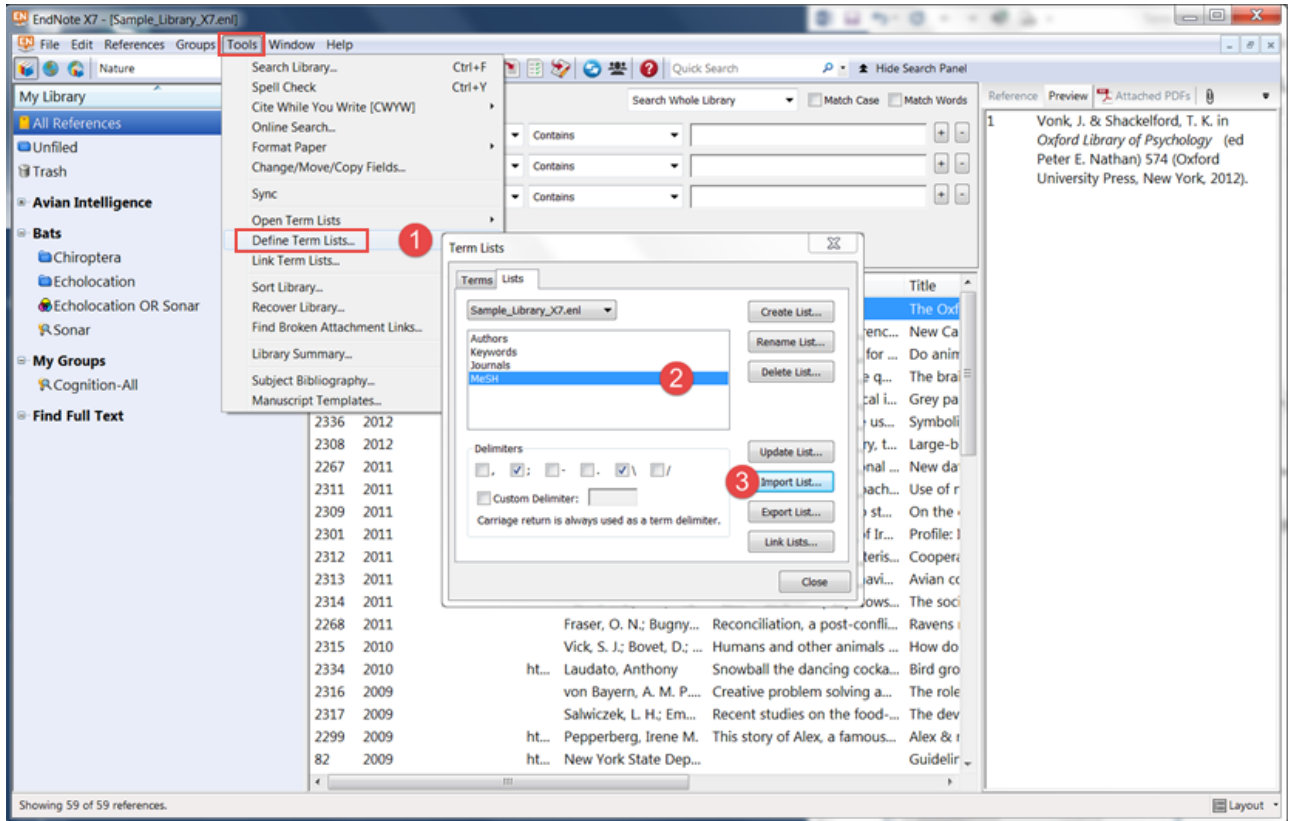
1. Choose *Tools* > *Define Term Lists*.
2. Click the *Create List* button.
3. In the *Term List Name* dialog enter the name of the new list (**MeSH**). Click *OK*.



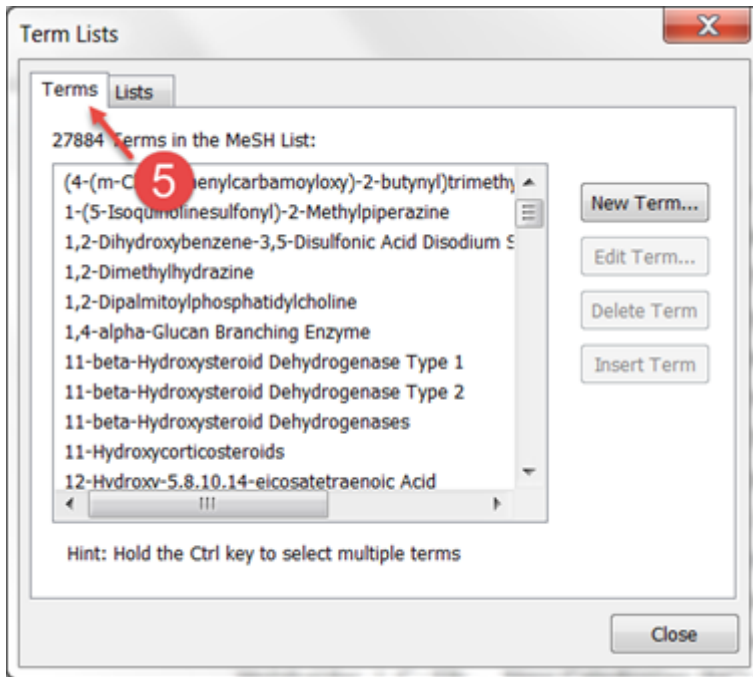
Importing terms into Term List

To import the biomedical thesaurus with MeSH terms into the Term List:

1. Choose *Tools > Define Term Lists*.
2. Select the empty Term List you made in the previous exercise (**MeSH**).
3. Click the *Import List* button.



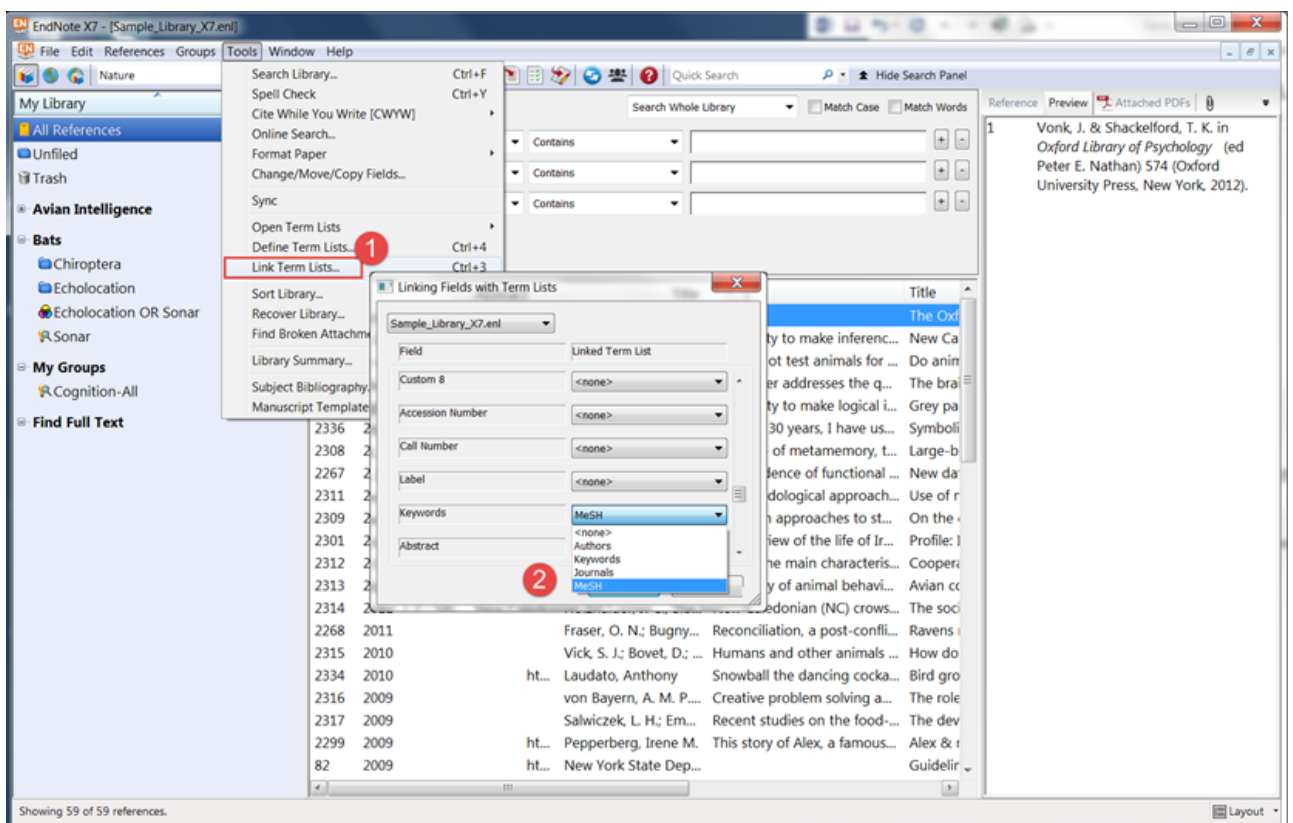
4. In the *Open* dialog select the **mesh.txt** file to be imported. Click the *Open* button and click *OK*.
5. Click the *Terms* tab to display the imported terms.



Linking Term List

To link the new MeSH term list to different fields:

1. Choose *Tools* > *Link Term Lists*.
2. Link the MeSH term list to the field names you've chosen and click *OK*.



Preferences

Edit > Preferences > Term Lists

Labels

[term lists](#) [2]

[mesh terms](#) [3]

[importing term lists](#) [4]

[linking term lists](#) [5]

Copyright © 2001-2018 DISC BV, Haarlem, NL. All rights reserved.

Source URL (modified on 10/08/2016 - 12:50): <https://researchsoftware.com/term-lists>

Links

[1] <http://www.researchsoftware.com/downloads/mesh-terms-medical-subject-headings-nlm-2016-0>

[2] <https://researchsoftware.com/book-labels/term-lists>

[3] <https://researchsoftware.com/book-labels/mesh-terms>

[4] <https://researchsoftware.com/book-labels/importing-term-lists>

[5] <https://researchsoftware.com/book-labels/linking-term-lists>